

ELEVATION MATERIAL NOTES

- 1 - WALLS - (E.I.F.S.)
- 2 - EXTERIOR INSULATION FINISH SYSTEM
- 3 - COILING JOINT (PACKED AS CJ ON DRAWINGS) 3/8" X 3/4" CONSTRUCTION JOINT PLE I.F.S. WHERE I.F.S. THICKNESS DOES NOT CHANGE)
- 4 - 2" HIGH X 1 1/2" DEEP RUSTICATION JOINT
- 5 - NOT SHOWN
- 6 - PREFINISHED ALUMINUM COLLECTOR HEAD, GUTTERS & DOWNSPOUT (BLACK, UNLESS OTHERWISE NOTED)
- 7 - HOLLOW METAL DOORS (SEE SCHEDULE)
- 8 - GLASS ALUMINUM DOORS (SEE SCHEDULE)
- 9 - 4" X 8" WINDOW UNLESS NOTED OTHERWISE
- 10 - THRU-WALL HVAC UNIT: SEE MECH. COLOR TO MATCH ADJACENT EIFS COLOR
- 11 - MECH. LOUVERS (SEE MECH. SCHEDULE FOR SIZE, ALSO REF. STRUCTURE AND LOCATION. PAINT COLOR TO MATCH ADJACENT SURFACE)
- 12 - EXPANSION JOINT IN EIFS (FINISH TO BE 3/4" ON DRAWINGS) SHEATHING WITH SEALANT & BACKER ROD. REFER DTLS 4A2.2, 6A2.2, & 6A2.2
- 13 - EXTERIOR LIGHTS: REFER TO ELECTRICAL
- 14 - NONFUNCTIONAL DECORATIVE LOUVER TO MATCH THRU-WALL HVAC LOUVER

E.I.F.S. COLOR
MATCH E.I.F.S. COLOR TO THE FOLLOWING BENJAMIN MOORE COLORS

A - WHITE HERON	OC-67
B - WHITE SAND	OC-10
C - PROVIDENCE OLIVE	HC-98
D - LOG CABIN	BM-103-10
E - VALLEY FORGE TAN	AC-35
F - ANCHOR GRAY	2128-30

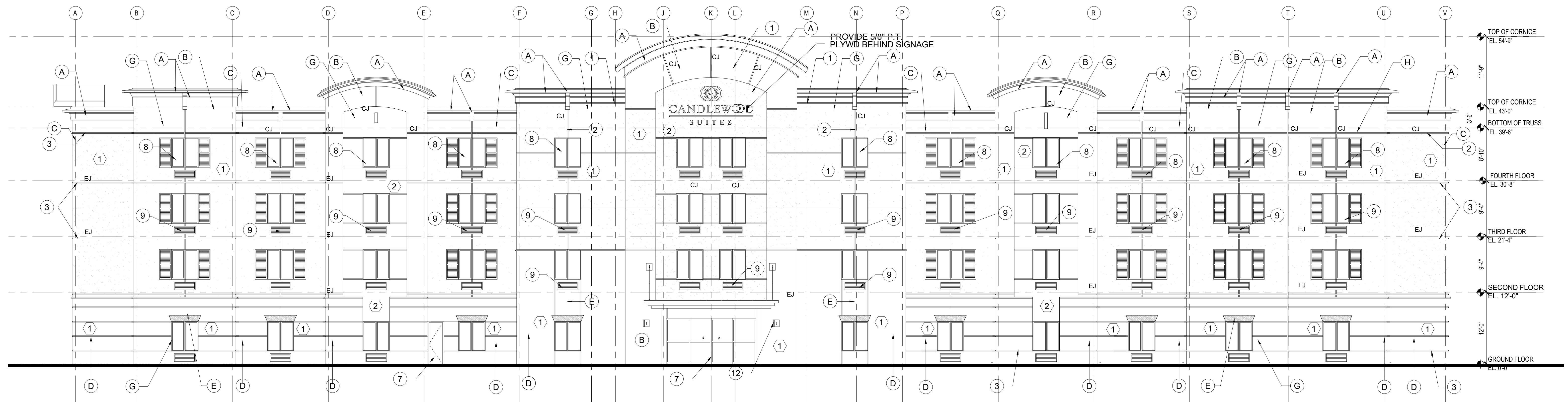
E.I.F.S. THICKNESS

- 1 - 1/2" THICK E.I.F.S.
- 2 - 4" THICK E.I.F.S.
- 3 - 5 1/2" THICK E.I.F.S.
- 4 - 8" THICK E.I.F.S.

NOTES

- COLOR OF FASCIA AND SOFFIT TO MATCH E.I.F.S. COLOR
- CONDUCTOR HEADS SHALL BE BRACKETED & FINISHED TO MATCH ADJACENT BUILDING SURFACE
- ALL BRACKETS COLOR TO MATCH PERFECT BRACKETS WC #2 BLACK STRAIGHT LS
- BRACKET COLOR TO MATCH BENJAMIN MOORE COLOR: WHITE HERON OC-67

2 RIGHT SIDE ELEVATION
A501
SCALE: 1/8" = 1'-0"



1 FRONT ELEVATION
A501
SCALE: 1/8" = 1'-0"

NITIN KULKARNI
AIA NCARB
DESIGN ENCLAVE CONSULTANTS LLC
5340 AVERY GREEN DR
GLEN ALLEN VA 23059
(804) 514-2455
(804) 200-4085

CANDLEWOOD SUITES

**AT DUMFRIES VA
FOR AWANA HOTELS LLC.**

8-15-2016	IHG FRANCHISE REVIEW SET	SHEET TITLE	BUILDING ELEVATIONS	
8-26-2016	COUNTY PERMIT SET		DATE: 8-26-2016	SHEET NO.
				A-501
DATE	ISSUE/REVISION			CANDELWOOD-DUMFRIES-VA-501ELEV